

**SPECIAL ENVIRONMENTAL PROTECTION ZONE OF FETHIYE TO GOCEK  
AND DALAMAN BAYS  
APPLICATION OF PROCEDURES AND PRINCIPLES FOR PROTECTION**

Purpose:

**Article 1** defines the purpose of the principles and procedures that apply to the Fethiye-Göcek Special Environment Protected Region. The objective is to protect the biological diversity, and environment within the Gulf of Göcek Göcek-Dalaman Bays by the prevention of pollution within these areas.

Scope:

**Article 2** - The scope of these measures within the Fethiye-Göcek Special Environment Protected Region, located in the Gulf of Göcek and Göcek - Dalaman Bays, covers the areas specified in the attached map.

Basis:

**Article 3** - The legal framework for the measures is provided within the provisions of the 2872 Amendment Act 9 and 21, and the measures have been prepared in accordance with the provisions of Decree Law 383.

Definitions:

**Article 4** - The following definitions apply for the implementation of the measures;

**Ministry:** Ministry of Environment and Forests

**Organisation:** Special Environmental Protection Agency

**Anchoring:** Any mooring not attached to mooring facilities ashore.

**Waste ( foul) Water:** black water, bilge water, ballast water, and any sludge contained within the hull.

**Connecting Location:** coastal facilities available, such as a pier, dock, etc... binding site with the facilities do not exist in place of the land done by the bollard,

**Anchoring:** Holding the boat at sea with any device to the sea bed,

**Ship:** A vessel, regardless of name, purpose, tonnage and use or means of propulsion, other than a rowing boat propelled only by oars.

**Gocek Bay and Göcek - Dalaman Bays:** Fethiye and Göcek Special Environment Protected Region includes both the waters adjacent to the islands and mainland, and is defined by the coordinates set out below, and on the map attached.

**Grey water:** All water originating from bathroom, kitchen and sink, but

isolated from black water systems.

**Excursion Boat Trip:** A journey by boat for the purposes of travel, sports, entertainment and tourism, commencing from and terminating in the same harbour on the same day. The vessel to be licensed for seaworthiness.

**Solid waste:** As defined by MARPOL 73/78 Annex V, solid waste resulting from domestic and operational activity, e.g. cartons, bottles, cans, oil cans, filters.

**Coastal structures (plants):** land-based structures to provide services to ships and vessels, including piers, quays, etc.

**Dirty Ballast:** Ballast which when discharged contains oil or petroleum or other products that may cause a slick on the surface, discoloration of the water or adjoining shore, or forming suspended solids / emulsion.

**Waste Water:** In general, the black water and grey water,

**Bilge:** The lower part of a vessel, where water and oily waste, originating from engines, auxiliary machinery, sub-tanks, coffer dams, holds etc. may accumulate.

**Bilge Water:** Any liquids that accumulate in the bilges.

**Sludge:** Sediments which may accumulate within fuel tanks or cargo tanks of oil tankers.

**Water vessell:** outside the ship, floatingwater that can be allocated and used in accordance with the purpose, all kinds of vessels tools and structure

**Commercial Vessels:** Vessels in excess of 250.000 tons (dwt)

**Yacht:** A vessel used for travel, sports and entertainment suitable for use in commerce for the purpose of sea tourism, having a cabin, toilet and kitchen, excluding freight vessels, passenger vessels and fishing boats.

**Yacht harbour:** A harbour providing a secure mooring for a yacht, with direct access on foot from ashore, having sufficient depth of water, and protected from the effects of wind and sea, licensed by Undersecretariat of the Prime Minister, with the technical and social infrastructure, management, support, maintenance and repair services.

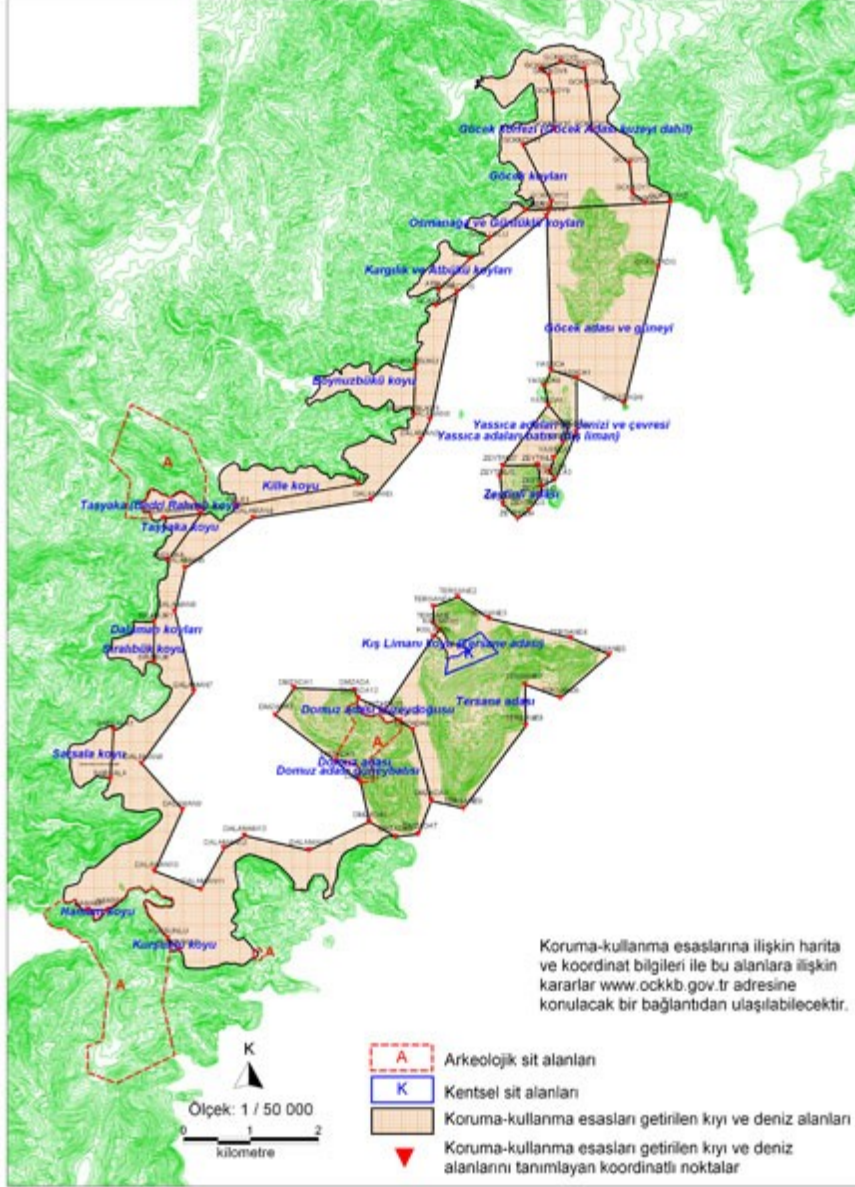
Principles:

Article 5 - The Gulf of Gocek, Dalaman and Göcek bay and pollution to the protection of the general principles of prevention are:

- a) The measures applying to Fethiye-Göcek Special Environment Protected Region for biodiversity and environmental protection, pollution prevention, are to be observed by everyone.

- b) The costs of preventing, limiting and recovering the effects of pollution and other environmental costs will be borne by the persons causing the pollution. In accordance with the Environmental Law and the Gulf of Göcek Göcek-Dalaman Bays, Law 6183, regarding the necessary expenditure and of the Debt Collection Procedure No. Amme.**
- c) Vessels without tanks for the storage of waste water are not allowed in the Gulf of Göcek and Göcek - Dalaman.**
- d) Vessels entering the Gulf of Göcek and Göcek - Dalaman must moor to an approved mooring, e.g. yacht harbor, pier, bollard, etc**
- d) Vessels with Gulf of Gocek, Dalaman and Göcek bays must adhere to the Regulation on Noise Pollution whereby music broadcast is prohibited.**
- e) Cooking on deck or ashore is prohibited with the Gulf of Gocek, Dalaman and Göcek coves.**
- f) Ships intending to enter the Gulf of Göcek must complete the exchange of ballast water before entering the Aegean Sea.**
- g) Dirty water and oily waste may not be discharged within the Gulf of Gocek, Dalaman and Göcek Bay. Crude Oil, bilge water and ballast water contaminated with the waste of partners must be discharged to waste reception facilities and / or waste vessel..**
- h) Waste water discharged from ships within the Gulf of Göcek Göcek-Dalaman Bays will be recorded on the (Blue Card) chip initiated by the Muğla Provincial Directorate of Environment and Forests. The chip card will be made available for inspection by officials during inspections.**
- i) Amateur and commercial vessels within the Gulf of Göcek Göcek - Dalaman will comply with Fisheries Law No. 1380 regulations regulating fishing.**

GÖCEK KÖRFEZİ, GÖCEK-DALAMAN KOYLARI  
KORUMA KULLANMA ESASLARI METNİNİN HARİTA EKİDİR



Areas prohibited for diving:

**Article 6 - Göcek Bay and Göcek - Dalaman bays located in urban and archaeological sites;**

**a) Hamam Bay**

**360 38 '34 "latitude, 280 51' 26" longitude (BATH),**

**360 38 '34 "latitude, 280 51' 14" longitude (HAMAM1)**

**consisting of points with lines in the area between the coast (II Degree Archeological area),**

**b) Winter Harbor Cove (Shipyard Island)**

**360 40 '42 "latitude, 280 54' 44" longitude (KISLIMAN)**

**360 40 '46 "latitude, 280 54' 48" longitude (KISLIMAN1)**

**consisting of points in the area between the coast line, with (III. Degree Sit urban area),**

**c) northeast of the island of Pigs**

**360 40 '2 "latitude, 280 54' 23" longitude (DMZADA10)**

**360 40 '7 "latitude, 280 54' 14" longitude (DMZADA11)**

**360 40 '13 "latitude, 280 53' 58" longitude (DMZADA12)**

**consisting of points with the coastal area between the line (II Degree Archeological field)**

**southwest of the island with pigs**

**360 39 '43 "latitude, 280 53' 44" longitude (DMZADA3)**

**360 39 '32 "latitude, 280 53' 59" longitude (DMZADA4)**

**consisting of points with lines in the area between the coast (II Degree Archeological area),**

**d) Taşyaka (Bedri Rahmi) Dark**

**360 41 '44 "latitude, 280 52' 26" longitude (BEDRAHMI)**

**360 41 '42 "latitude, 280 52' 4" Longitude (BEDRAHMI1)**

**consisting of points with lines in the area between the coast (II and III. Degree Archeological field)**

**C) Diving in Gocek Dalaman is subject to official permit only.**

**d) Ships Closed Areas:**

**Article 7 - Ships Closed Areas are listed below.**

**a) Bath bay**

**360 38 '34 "latitude, 280 51' 26" longitude (BATH),  
360 38 '34 "latitude, 280 51' 14" longitude (HAMAM1)  
consisting of points with lines in the area between the coast (II  
Degree Archeological area),  
closed to all vessels.**

**b) Yassica Island and the surrounding area of the inland sea as the**

**360 42 '50 "latitude, 280 55' 57" longitude (YASSCA)  
360 42 '45 "latitude, 280 56' 13" longitude (YASSCA1)  
360 42 '19 "latitude, 280 56' 12" longitude (YASSCA2)  
360 41 '57 "latitude, 280 55' 59" longitude (YASSCA3)  
360 42 '0 "latitude, 280 55' 55" longitude (YASSCA4)  
360 42 '7 "latitude, 280 55' 58" longitude (YASSCA5)  
360 42 '15 "latitude, 280 56' 4" Longitude (YASSCA6)  
360 42 '21 "latitude, 280 56' 7" longitude (YASSCA7)  
360 42 '33 "latitude, 280 55' 55" longitude (YASSCA8)  
360 42 '42 "latitude, 280 55' 53" longitude (YASSCA9)**

**Closed to Daily Trip vessels: these may use the island's west side  
overlooking the bollards and buoys Restriction does not apply to  
yachts.**

**c) In the area specified by the coordinates around Yassica island,  
other than day trip boats the ships can cruise but they are not  
allowed to anchor during the day. Except the day tour boats the  
ships are allowed to during the night.**

**Restricted Use Areas:**

**Article 8 - Göcek Gulf and Göcek - Dalaman put to use in the  
Restricted Areas**

**A) Commercial vessels may not navigate in the Gulf of Göcek between  
08:00-23:00**

**B) Commercial and water ships may wait in the allocated standby  
point (Alarga) in Gocek Island to unload cargoes and water.**

C) In Göcek and Dalaman Bay, the ships are not allowed to tie other than at coastal facilities and waterfront piers and buoys, the ships are also not allowed to anchor other than the areas specified by the harbour master which are detailed in application of Procedures and principles.

In this context;

Gocek Bay and Göcek - Dalaman purpose of putting the protection of sea grass

a) Göcek Bay (Göcek Island, including the north) and is defined as  
360 44 '7 "latitude, 280 55' 44" longitude (Osmanağa)  
360 44 '9 "latitude, 280 57' 11" longitude (GCKADAKZ)  
consisting of points with lines in the area between the coast,

b) inland sea and surrounding islands with Yassica Yassica western islands (external port) and is defined as;

360 42 '50 "latitude, 280 55' 57" longitude (YASSCA)  
360 42 '45 "latitude, 280 56' 13" longitude (YASSCA1)  
360 42 '19 "latitude, 280 56' 12" longitude (YASSCA2)  
360 41 '57 "latitude, 280 55' 59" longitude (YASSCA3)  
360 41 '53 "latitude, longitude, 280,55,50 (ZEYTINLI1)  
360 42 '4 "latitude, 280 55' 48" longitude (OLIVE)  
360 42 '4 "latitude, 280 55' 27" longitude (ZEYTINLI7)  
360 42 '33 "latitude, 280 55' 55" longitude (YASSCA8)  
360 42 '42 "latitude, 280 55' 53" longitude (YASSCA9)  
points in the remaining area,

c) Winter Harbor Cove (Shipyard Island):

360 40 '42 "latitude, 280 54' 44" longitude (KISLIMAN)  
360 40 '46 "latitude, 280 54' 48" longitude (KISLIMAN1)  
consisting of points with lines in the area between the coast,

d) Kurşunlu Bay:

360 38 '20 "latitude, 280 52' 1" longitude (KURSUNLU)  
360 38 '13 "latitude, 280 52' 8" Longitude (KURSUNLU1)  
consisting of points with lines in the area between the coast,

e) Sıralıbüyük Bay:

360 40 '32 "latitude, 280 51' 56" longitude (SIRABUK)  
360 40 '52 "latitude, 280 51' 57" longitude (SIRABUK1)  
consisting of points with lines in the area between the coast,

f) Sarsala Bay:

360 39 '36 "latitude, 280 51' 29" longitude (Sarsala)  
360 40 '1 "latitude, 280 51' 31" longitude (SARSALA1)  
points comprising the area between the coast and in the mooring lines  
can not be done, the only available shipping piers, docks, and buoys  
can connect mapa.

**Gocek Bay and Göcek - Dalaman put the beneficiary of the rules:**

Article 9 - The Gulf of Göcek and Göcek - Dalaman rules are set to  
benefit from;

- e) a) Göcek - Dalaman. Numbers limited to mooring points (buoys and bollards).**  
**b) Göcek - Dalaman Mooring ships to trees is prohibited. Mooring only in areas where existing piers, docks, and buoys and bollards.**  
**c) Göcek - Dalaman Bays. Day trip vessels may only enter the areas between 10:00 to 20:00 hours defined by the attached map designated the Gulf of Göcek, Göcek Island south, Olive Island and Pig Island, Yassica Island in the western part, Sarsala, Taşyaka, Boynuzbükü, Atbükü, journal, Kargılı, Kille**

Those hours of daily trips between the coastal bays are to be found with facilities in this section and with the exception of the bay Göcek - Dalaman is forbidden to enter the bay. Cannot enter except piers, jetties, quays etc.

**d) Solid wastes; solid waste must only be deposited in containers at specific locations, situated in Kille Bay, sheep Sarsala. Not to be left in any other bay**

**e) Göcek - Dalaman Bays Mooring to a bollard will be limited to 11 days maximum, after which the bollard must be vacated.**

**g) The Gulf of Gocek, Dalaman and Göcek Bays Except with pilotage services, vessels shall not exceed 6 knots.**

**And the Gulf of Göcek Göcek - Dalaman Bays Preventing the Use of Bays Outside Objective:**

Article 10 - Göcek-Dalaman Bays Prevention of use for other purposes

**a) Gulf of Gocek, Dalaman and Göcek Bays. Vessels will not transfer from ship to ship oil and other harmful substances, which is strictly**

prohibited, except in the in the course of securing, life, property and environmental safety requirements.

b) The ships which have no registry obligation and the ships other than the yacht (private, commercial and other), cruise (pleasure) ships, boats, tug boat, amateur fishing boat, waste collection ship, task / patrol ship, fire fighting vessel, diving vessel, pilot boat, search and rescue ship, ship wreck removal, the floating waste reception facilities, scientific research / analysis ship are not allowed to enter the Gulf of Gocek and Dalaman Göcek Bays.

c) In case of necessity, prohibited ships may be allowed to enter for specific activities, subject to a temporary special permit of the Harbor Master..

d) All kind of ships can enter Gocek Harbor if the type oof thge ship is suitable to the purpose of the facilities provided by this port.

Gocek Bay and Göcek - Dalaman bays Audit:

Article 11 - The protection and use procedures and compliance with the principles of authority and coordination control belongs to the Muğla Governorship.

Implementation will be under the control of a commission, comprising Special Environmental Protection Agency, Maritime Undersecretariat, İzmir Regional Directorate, Göcek Harbor, Mugla Province Environment Directorate of Forestry, the Coast Guard with the Muğla Governorship and other relevant institutions.

Sanctions:

Article 12 - The protection and utilization principles and procedures comply with the 2872 Act unless the 21, 22 materials and other administrative and penal provisions contained in legislation meri than is carried out.

Other provisions:

**Article 13 - The harbour authority may make exceptions if necessary during the transitional period. Permanent changes are under the control of the commission.**

Execution:

**Article 14 - The measures will be implemented by the special environment protection office. Ministry Environment and Forests, under the Authority of the Muğla Governorship.**

Effective:

**This protection procedures and use-Madde15 and principles shall enter into force on 01/Ağustos/2009.**